

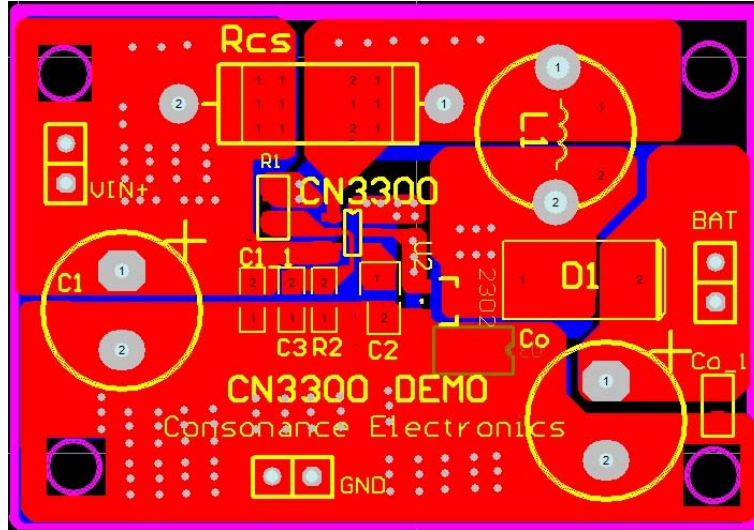
CONSONANCE

Quick Start of CN3300 Demo Board

1、 Overview

CN3300 demo board is for the purpose of fast evaluation of CN3300

2、 PCB Layout of CN3300 Demo Board



3、 Component List and Descriptions

No.	Name	Decription
1	VIN+	Positive Terminal of Input Power Supply.
2	GND	Negative Terminal of Input Power Supply.
3	BAT	Positive Terminal of Battery.
4	CN3300	Step up Charger IC CN3300
5	R1	The Charge Termination Voltage Setting Resistor.
6	R2	The Charge Termination Voltage Setting Resistor.
7	Rcs	The Current Sense Resistor.
8	L1	Inductor.
9	D1	Free Wheeling Diode. Schottky diode is preferred for higher efficiency.
10	U2, U3	External N-Channel MOSFET. U2 is for the MOSFET in SOT23 package and U3 is for the MOSFET in SOP8 package.
11	C1, C1_1	Input Bypassing Capacitor. C1 is for electrolytic capacitor, and C1_1 is for ceramic capacitor.
12	Co, Co_1	Output Bypassing Capacitor. Co is for electrolytic capacitor, and Co_1 is for ceramic capacitor.
13	C2	VCC Bypassing Capacitor. A 4.7uF or 10uF ceramic capacitor can be used.
14	C3	FB Pin Filtering Capacitor.